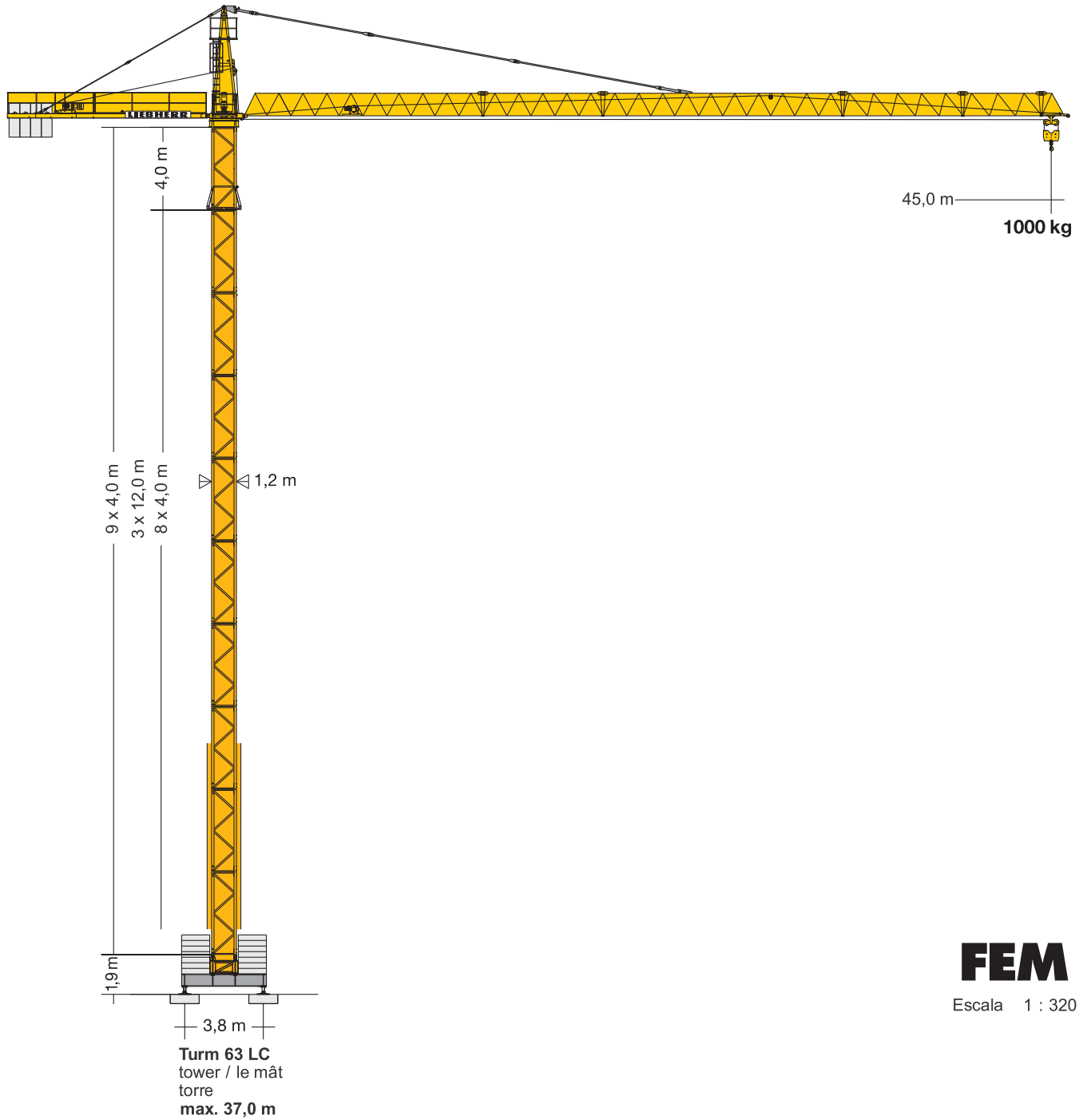


LIEBHERR 63 LC



FEM
Escala 1 : 320

Tels.:(55) 9149 8900 / 5250 2844
www.calidadenrentasyventas.com
Servicio a toda la República Mexicana

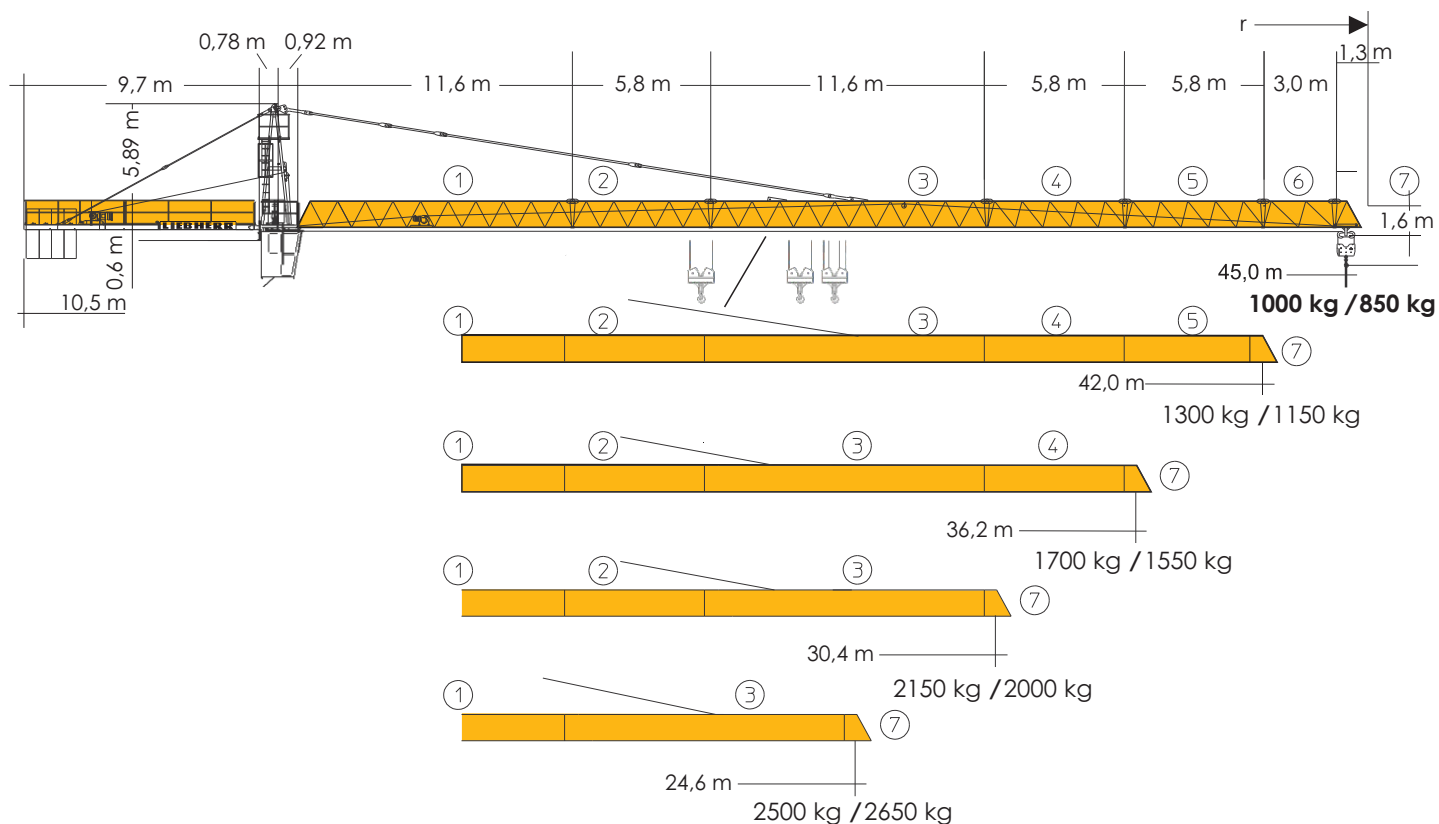
Alcance y capacidad de Carga

m	r	m/kg	m/kg														
			12,0	14,0	16,0	18,0	20,0	22,0	24,6	28,0	30,4	34,0	36,2	40,0	42,0	45,0	
45,0	(r = 45,9)	2,1-20,6 2500						2500	2330	2050	1770	1610	1410	1310	1160	1090	1000
42,0	(r = 42,9)	2,1-23,8 2500						2500	2500	2410	2080	1900	1670	1550	1380	1300	
36,2	(r = 37,1)	2,1-25,7 2500						2500	2500	2500	2280	2080	1830	1700			
30,4	(r = 31,3)	2,1-26,6 2500						2500	2500	2500	2360	2150					
24,6	(r = 25,5)	2,1-24,6 2500						2500	2500	2500							
m	r	m/kg	m/kg														
45,0	(r = 45,9)	2,1-19,8 2500	2,1-10,9 5000	4480	3760	3220	2800	2470	2200	1920	1630	1470	1260	1160	1010	940	850
42,0	(r = 42,9)	2,1-22,8 2500	2,1-12,5 5000	5000	4400	3780	3300	2920	2610	2280	1950	1760	1520	1400	1230	1150	
36,2	(r = 37,1)	2,1-24,5 2500	2,1-13,5 5000	5000	4790	4110	3600	3180	2850	2500	2140	1930	1680	1550			
30,4	(r = 31,3)	2,1-25,3 2500	2,1-13,8 5000	5000	4940	4250	3710	3290	2940	2580	2210	2000					
24,6	(r = 25,5)	2,1-24,6 2500	2,1-14,2 5000	5000	5000	4360	3810	3370	3020	2650							

Mecanismos

	U/min 0 - 0,8 sl./min tr./min	1 x 5,0 kW EDC
	19,0 / 38,0 m/min 21,0 / 42,0 m/min	1,0 / 1,8 kW 1,5 / 3,0 kW
	20,0 m/min	2 x 2,2 kW
	Red 70 kVA 440v.60 Hz	14,0 kW 14,0 kW FU 22,0 kW 29,0 21,0 38,0

	Marcha	kg	m/min
 3,2/ 14,0/ 14,0 kW WIW 210 MZ 402	4 Capas	1 2500 2 2500 3 1300	2500 6,2 2500 27,0 1200 54,0
 57,0 m LS Trommel		1 5000 2 5000 3 2500	3,1 13,5 27,0
 90,0 m LS Trommel	6 Capas	1 2400 2 2400 3 1200	6,5 28,5 57,0
 161,0 m LS Trommel		1 4700 2 4700 3 2350	3,3 14,3 28,5
 3,8 18,5/ 22,0 kW WIW 230 MZ 406	5 Capas	1 2400 2 2400 3 1350	8,2 38,0 76,0
 57,0 m LS Trommel		1 4700 2 4700 3 2700	4,1 19,0 38,0
 14,0 kW FU WIW 210 MZ 403	4 Capas	1 2500 2 2500 3 1900 4 1300	5,0 25,0 36,0 52,0
 57,0 m LS Trommel		1 5000 2 5000 3 3800 4 2600	2,5 12,5 18,0 26,0
 90,0 m LS Trommel	6 Capas	1 2500 2 2500 3 1750 4 1200	5,2 26,0 37,0 54,0
		1 5000 2 5000 3 3500 4 2350	2,6 13,0 18,5 27,0



Lastré central	FEM: 40.000 kg DIN: 50.000 kg	Contrapeso (Ausl. 45 m) 9.000 kg
Peso de construcción aprox.		19.400 kg

Altura bajo gancho

con Torre		63 LC			
Mas tramos de Torre					
4 m	12 m	m			
1		5,0	4,9	4,5	3,3
2		9,0	8,9	8,5	7,3
3	1	13,0	12,9	12,5	11,3
4		17,0	16,9	16,5	15,3
5		21,0	20,9	20,5	19,3
6	2	25,0	24,9	24,5	23,3
7		29,0	28,9	28,5	27,3
8		33,0	32,9	32,5	31,3
9*	3	37,0	36,9	36,5	35,3

Para alturas bajo gancho superiores, consultar.

LIEBHERR 63 LC

Tels.: (55) 9149 8900 / 5250 2844
www.calidadenrentasyventas.com
 Servicio a toda la República Mexicana