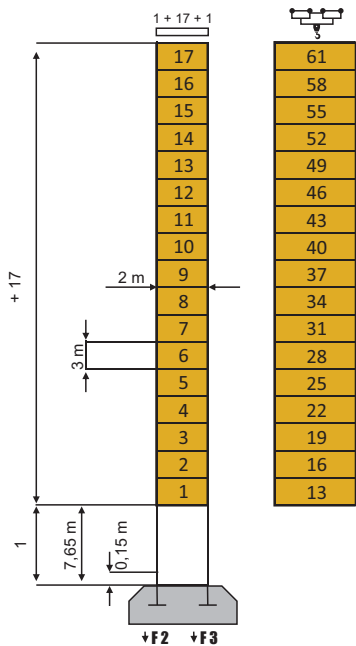
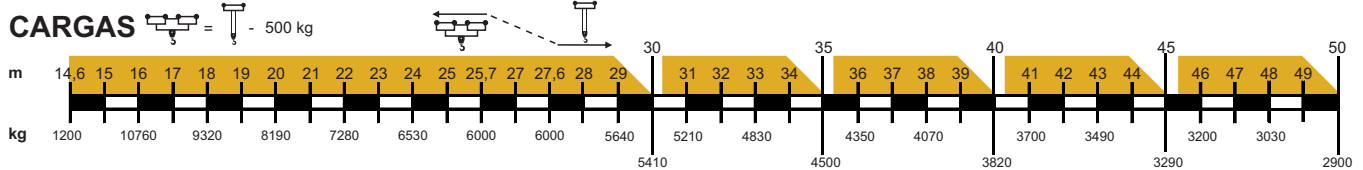
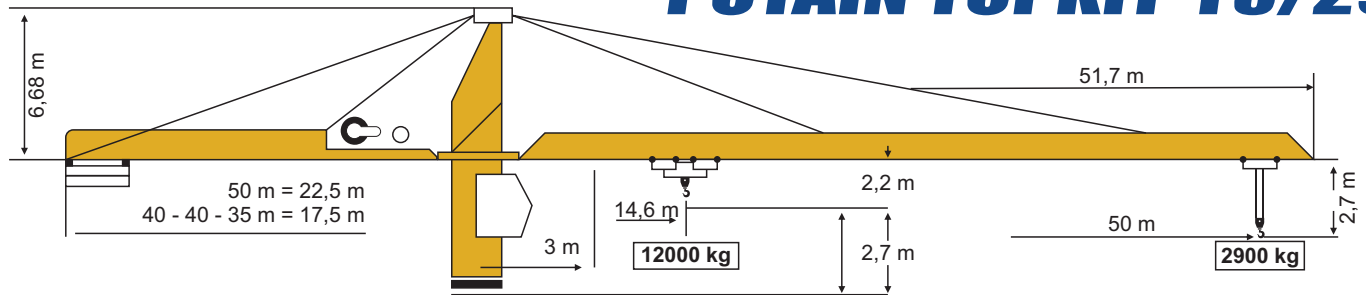


POTAIN TOPKIT F3/29

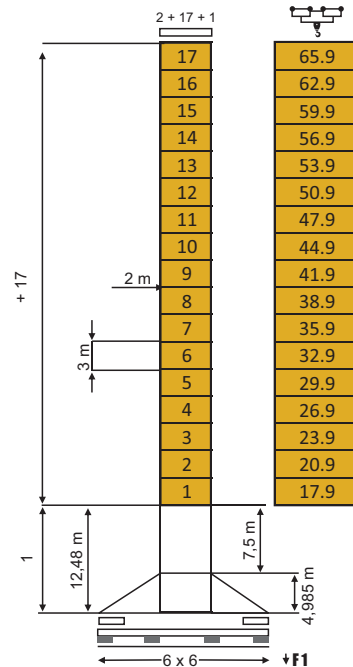


PA664

H maxi

RCS 22	70 m
LMD 46 B	100 m

F2 ● 138 t	■ 193 t
F3 ● 98 t	■ 158 t
69 t	



VA665

H maxi

RCS 22	68,9 m
LMD 46 B	101,9 m
F1 ● 94 t	■ 133 t
79 t	

$H \downarrow = H \downarrow - 0,50 \text{ m}$

		m/mm		kg
RCS 22 45 ch/hp			0 → 56	3000
			0 → 28	6000
			0 → 28	6000
			0 → 14	12000
LMD 46 80 ch/hp			0 → 100	3000
			0 → 50	6000
			0 → 200	1500
			0 → 50	6000
			0 → 25	12000
			0 → 100	3000

	OMD 55 ⁺	0	0.8 tr/mn rpm	2x8 ch/hp
	DMD 30	12 t 0	60 m/mn	8 ch/hp
		6 t 0	100 m/mn	8 ch/hp
		12 t 0	50 m/mn	8 ch/hp
	RT 544	22 m/mn		4x4 ch/hp
	RTT 645	27 m/mn		4x5 ch/hp
	RCT 646	12-60 m/mn		4 x 6.5 ch/hp

● Normal
● Rapido

380 V-50 Hz	Alimentación	Unidad de Generador
	① 75 KVA	Consultarnos
	② 120 KVA	

Tels.:(55) 9149 8900 / 5250 2844
www.calidadenrentasyventas.com
 Servicio a toda la República Mexicana