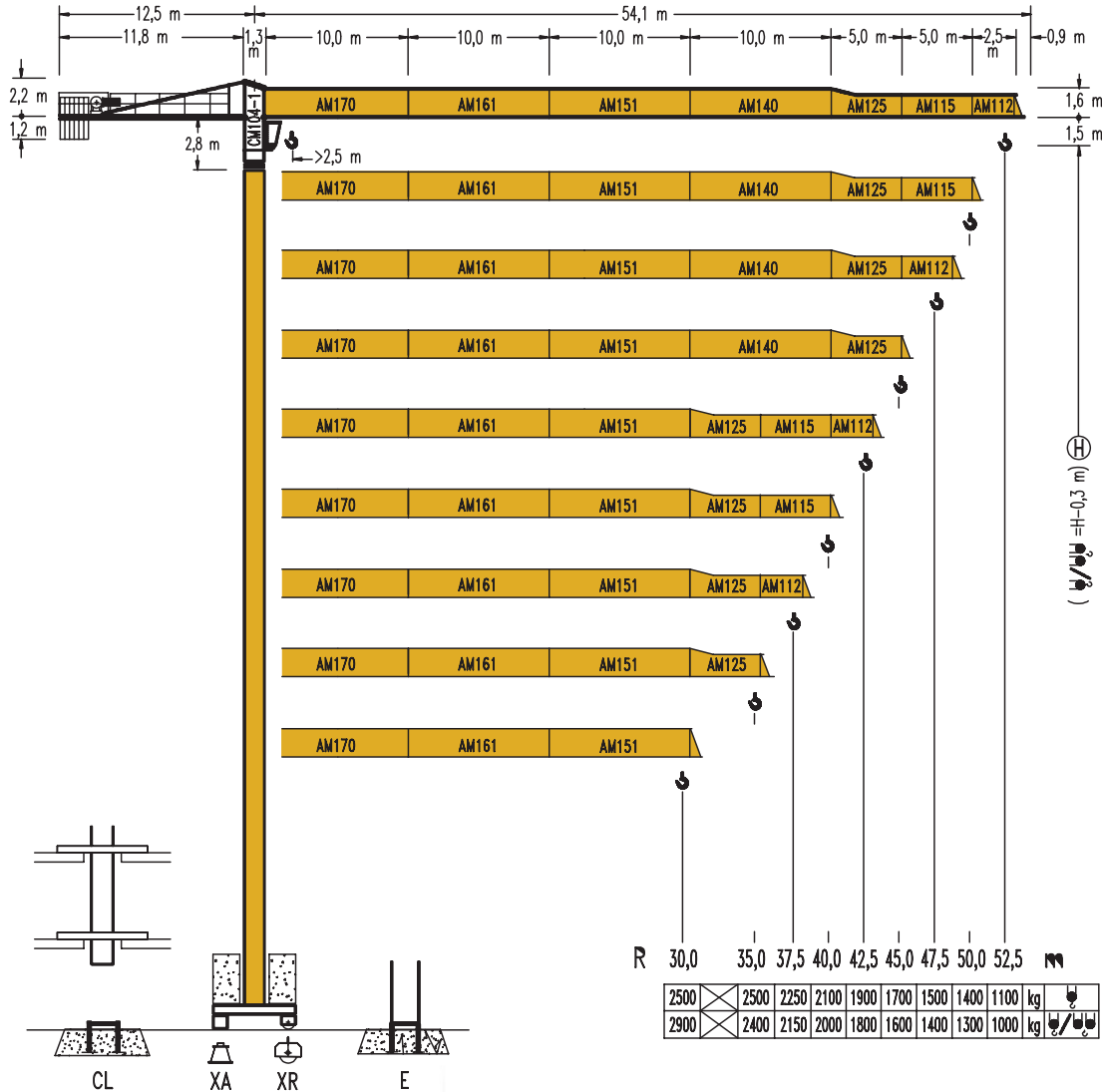


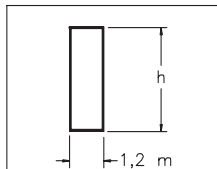
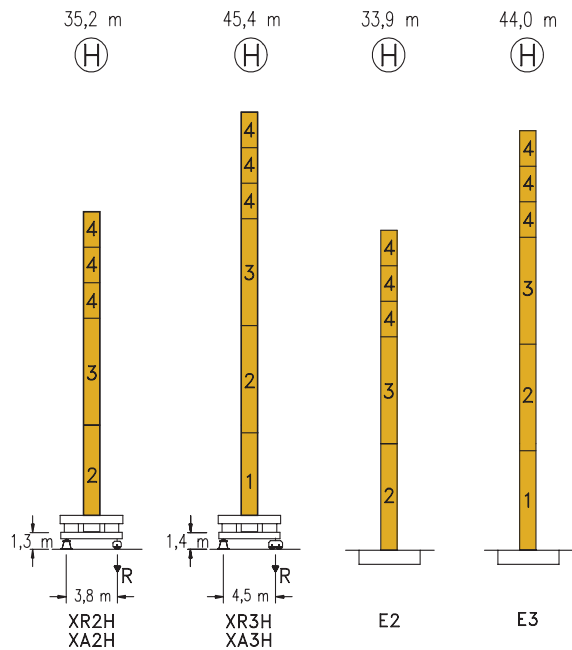
# COMANSA LC 5211



R	R(Cmax)	Cmax	20,0	25,0	30,0	35,0	37,5	40,0	42,5	45,0	47,5	50,0	52,5
52.5	☺☺☺	26,8 m	2500	2500	2190	1820	1680	1550	1440	1340	1250	1170	1100
	☺☺☺	14,2 m	5000	3380	2600	2080	1720	1580	1450	1340	1240	1150	1070
50,0	☺☺☺	30,8 m	2500	2500	2500	2150	1980	1840	1710	1590	1490	1400	
	☺☺☺	16,3 m	5000	3960	3060	2470	2050	1880	1740	1610	1490	1390	1300
47,5	☺☺☺	30,9 m	2500	2500	2500	2160	1990	1850	1720	1600	1500		
	☺☺☺	16,3 m	5000	3980	3080	2480	2060	1890	1750	1620	1500	1400	
45,0	☺☺☺	32,4 m	2500	2500	2500	2290	2110	1960	1820	1700			
	☺☺☺	17,1 m	5000	4200	3250	2630	2190	2010	1860	1720	1600		
42,5	☺☺☺	33,6 m	2500	2500	2500	2380	2200	2040	1900				
	☺☺☺	17,8 m	5000	4380	3390	2740	2280	2100	1940	1800			
40,0	☺☺☺	34,4 m	2500	2500	2500	2450	2260	2100					
	☺☺☺	18,2 m	5000	4500	3490	2820	2350	2160	2000				
37,5	☺☺☺	34,2 m	2500	2500	2500	2440	2250						
	☺☺☺	18,1 m	5000	4470	3470	2800	2340	2150					
35,0	☺☺☺	35,0 m	2500	2500	2500	2500							
	☺☺☺	18,5 m	5000	4580	3560	2880	2400						
30,0	☺☺☺	30,0 m	2500	2500	2500								
	☺☺☺	18,6 m	5000	4610	3580	2900							

m  
kg

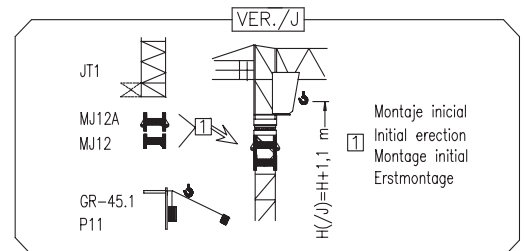
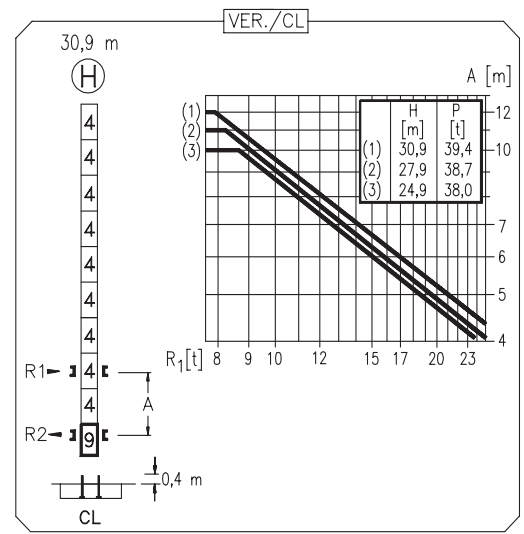
Tels.:(55) 9149 8900 / 5250 2844  
www.calidadenrentasyventas.com  
Servicio a toda la República Mexicana



N	Ref.	h
1	MT123	10,1 m
2	MH124A	11,8 m
3	MH124-1	11,8 m
4	MH121	3,0 m
9	CL20	2,2 m

MH124=(4)MH121-0,2 m

- H=H+0,2 m
- H=H
- H=H
- H=H-0,2 m



<b>R. máx.</b>	En servicio In operation En service In Betrieb	<b>XR2H</b> ..... 46,0 t
		<b>XR3H</b> ..... 49,0 t

<b>R. máx.</b>	Fuera de servicio Out of service Hors service Ausser Betrieb	<b>XR2H</b> ..... 50,9 t
		<b>XR3H</b> ..... 72,4 t

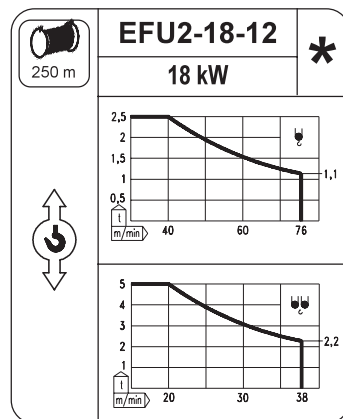
<b>CS2-1.9</b>
<b>1,9 kW</b>
<b>16 m/min 48 m/min</b>

<b>CFU-2.2</b>
<b>2,2 kW</b>
<b>0 ⇄ 80 m/min</b>

<b>GR-9.0</b>
<b>90 Nm</b>
<b>0 ⇄ 0,7 rpm</b>

<b>TS2-4.5</b>	<b>TS2-5.5</b>
<b>2x45 Nm</b>	<b>2x55 Nm</b>
<b>0 ⇄ 20 m/min</b>	
<b>XR2H</b>	<b>XR3H</b>

<b>ES3-18-12</b>				
<b>18 kW</b>				
		<b>I</b>	<b>II</b>	<b>III</b>
	m/min	8	2	6
	kg	2500	2500	1300
	m/min	4	8	2
	kg	5000	5000	2600



Tensión de alimentación	<b>440 V 3 ph 60 Hz</b>
-------------------------	---------------------------------

**COMANSA LC 5211**

Tels.:(55) 9149 8900 / 5250 2844  
 www.calidadenrentasyventas.com  
 Servicio a toda la República Mexicana